

Daniel Horowitz

TONGUELESS PELICANS

LEIPZIG INTERNATIONAL ART PROGRAMME



DANIEL B. HOROWITZ

Leipzig International Art Programme [LIA] - Spinnerstrasse 7, hall 18, 2nd floor

TONGUELESS PELICANS - Leipzig

September 12th and 13th, 2015

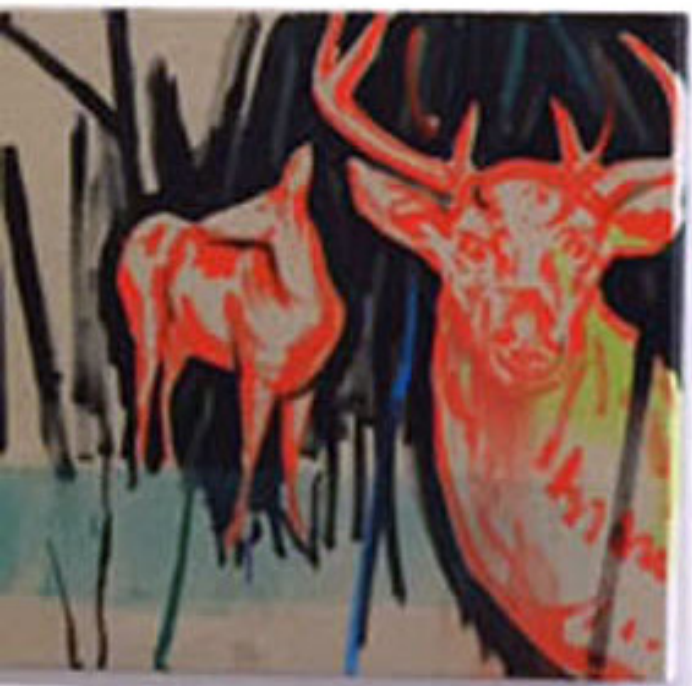
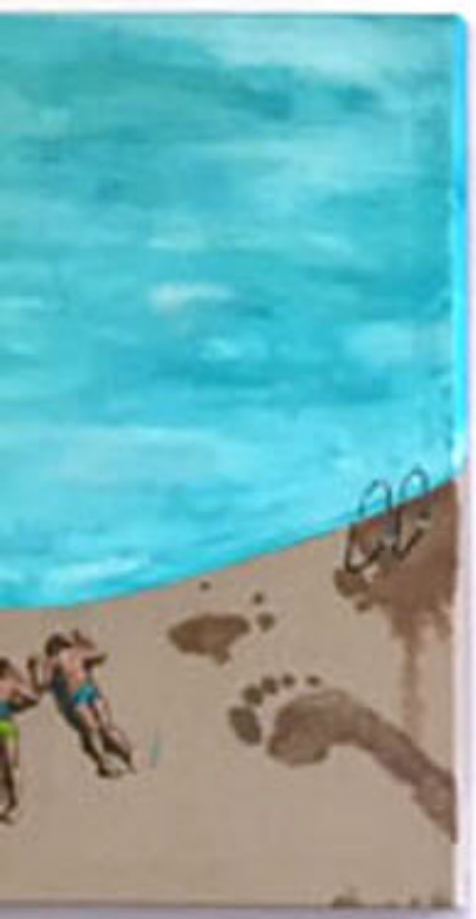
In his 1982 essay, *The Solitude of Latin America*, Gabriel Garcia Marquez evokes a maiden voyage to the *New World*, "Antonio Pigafetta, a Florentine navigator who went with Magellan on the first voyage around the world, wrote, upon his passage through our Southern lands of America, a strictly accurate account that nonetheless resembles a venture into fantasy. In it, he recorded that he had seen hogs with navels on their haunches, clawless birds whose hens laid eggs on the backs of their mates, and others still, resembling tongueless pelicans, with beaks like spoons."

I decided to travel East, in order to discover and describe in a somewhat similar fashion, a visual codex of the peculiar and the profane. This project is a painter's log of a reverse voyage to the *Old World*, into the uncanny. A place of many paradoxes; ideals and nightmares, socialism and capitalism, romanticism and realism, scary monsters and super creeps. Leipzig, Germany has come to represent many of these idiosyncrasies.

Upon being awarded a fellowship to the Leipzig International Art Programme, I took up residency and research for a duration of 4 months [June 1 to September 30.] My studio is located at the Spinnerei, a sprawling art mecca housed in a massive, repurposed industrial complex, inhabited by 120 artist studios, over 15 galleries, art foundations and lithography ateliers - cumulatively synonymous of the Neue Leipziger Schule.

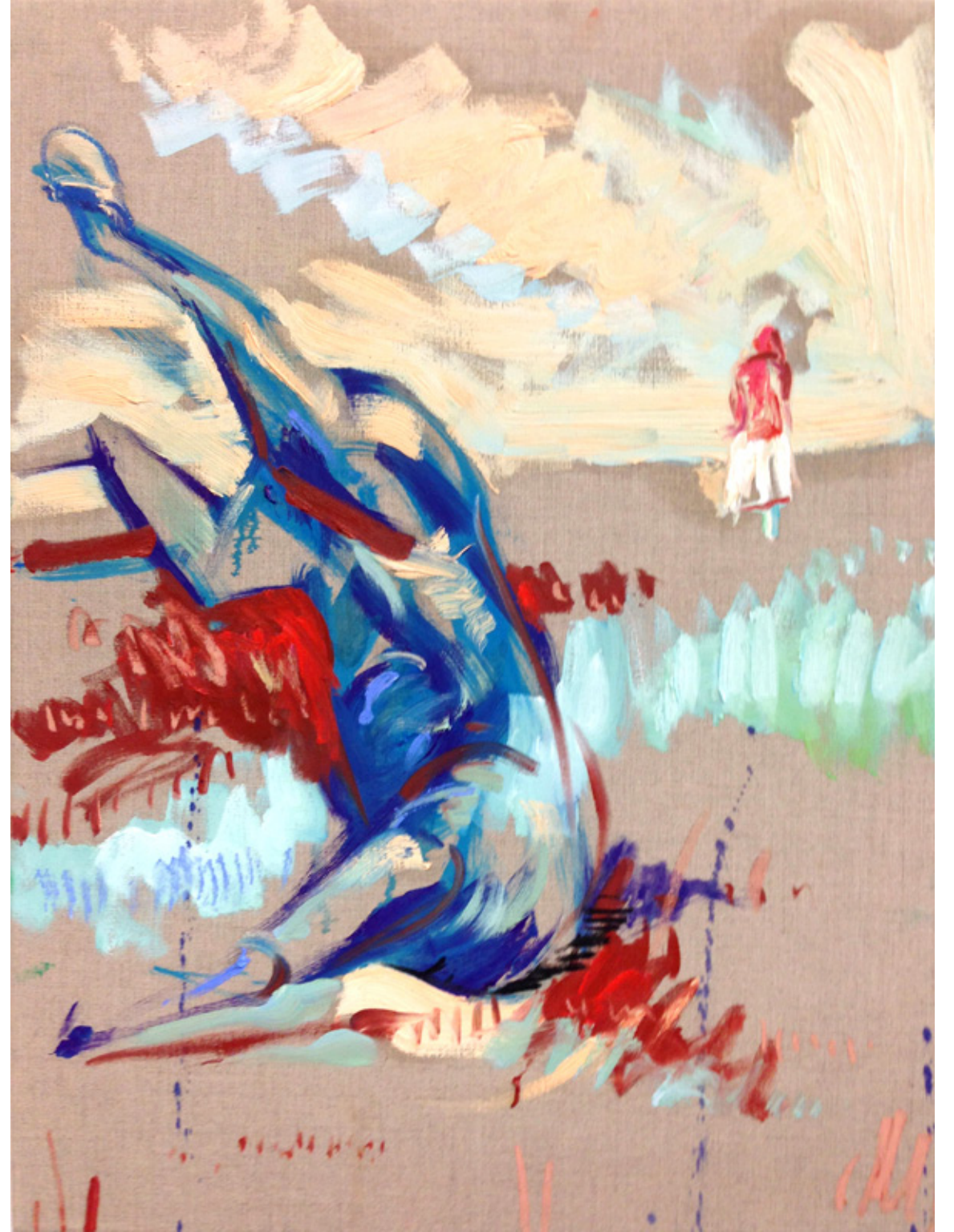
The site-specific *Tongueless Pelicans* project consists of a chronical of 30 paintings - all 60 x 80 cm (23.6 x 31.4 inches) - which will be unveiled and exhibited this Fall, September 12-13, during the annual Spinnerei *Rundgang* event. Audiences reach over 10 000 people every year.











✱







